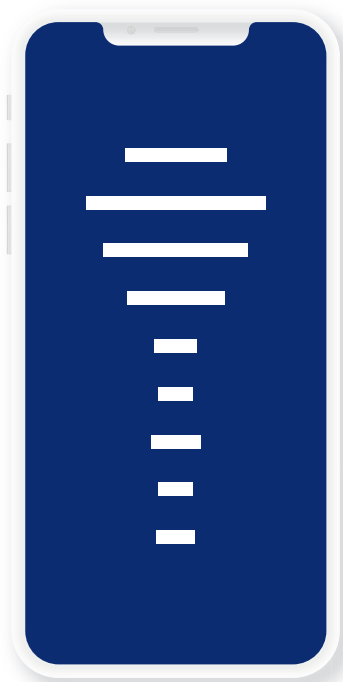


ABLOY® BEAT

A new dimension in high-end digital security solutions



ABLOY



Welcome to the keyvolution

Digitalisation has created new possibilities for secure wireless and digital security technology. At Abloy we are always aspiring to meet our customers' latest challenges in modern global security. In doing so, we constantly innovate and develop our digital portfolio. The latest is a transformation of our world leading locking technology into a new, highly secure, digital key. Our customers are provided with an entirely new solution of high-end digital security and efficiency.

ABLOY BEAT — a new dimension in high-end digital security solutions

Introducing ABLOY BEAT - our new digital solution, featuring a newly designed Super Weather Proof Bluetooth padlock, operated with a mobile app and digital key. ABLOY BEAT offers premium security and privacy protection, heralding a new era of effortless connectivity via our mobile application. BEAT is always in sync with your security situation within all critical infrastructure, industry and businesses. As part of our Digital Portfolio for Critical Infrastructure, BEAT is the start of a new digital era. Your bridge to the future.



A specially designed Super Weather Proof Bluetooth padlock

ABLOY BEAT features a newly designed, keyless padlock. It is Super Weather Proof and IP68 approved, with a Bluetooth BLE 4.2 connection range of 50m. Made to perform in demanding environments at all times. Online and offline connection available.

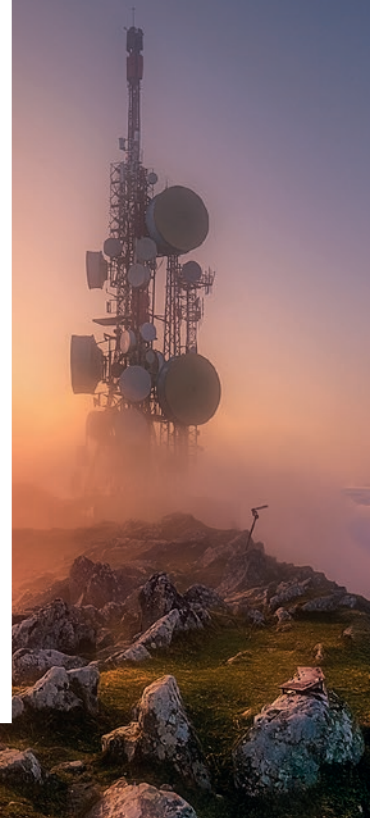
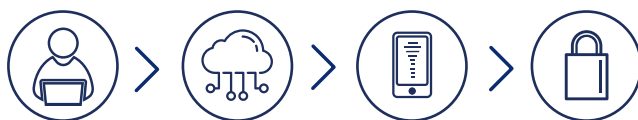


The convenience of mobile app access

The BEAT mobile app allows activation of users' own access rights and flexible access to specified locations, syncing all rights and movements with CIPE Manager. Especially useful in remote areas, busy schedules and emergency cases from wherever you are. Travel and key logistics are drastically simplified, saving on emissions, costs and time.

Complete privacy protection, specifically made for Critical Infrastructure

PKI-based Seos® credential technology, from HID global, provides best-in-class security and privacy protection for our new digital key, that operates our Super Weather Proof Bluetooth padlock via the BEAT mobile application.



The benefits of ABLOY BEAT



Powered by Seos®
Specifically made for
critical infrastructure
protection



Easy to use mobile
application



Convenience of a
keyless solution



High-end digital
security for all
environments



Super Weather Proof
(SWP) IP68 approved



Full audit trail



Online/Offline
access



Bluetooth padlock



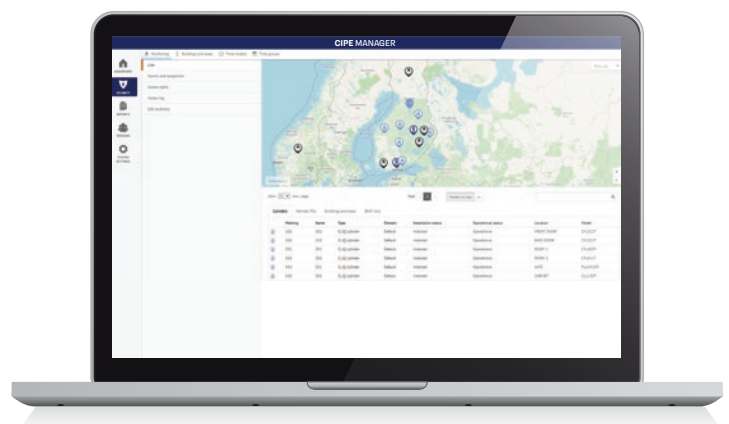
Managed with CIPE
or integrated with 3rd
party systems



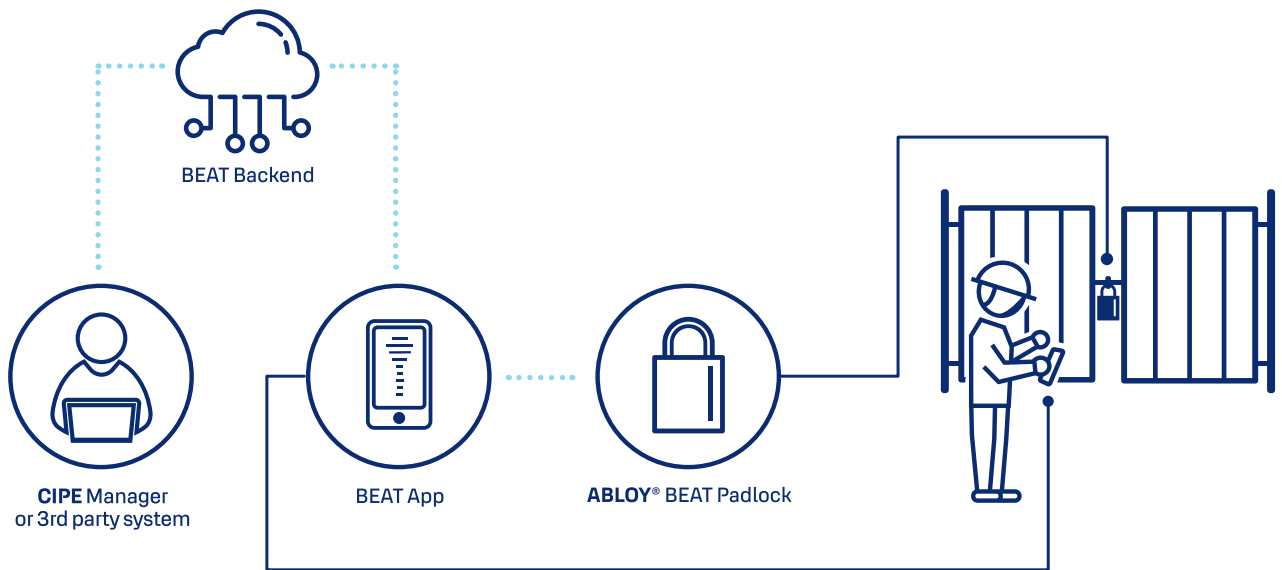
Latest addition to our
future-proof digital
portfolio

Managed with CIPE or added into your existing workflow

Manage your keys, locks and access rights on the go with CIPE Manager, our user-friendly, cloud-based management system. BEAT can also be integrated with 3rd party systems and added to your existing workflow.



How it works



- BEAT is managed with CIPE manager or with a 3rd party system
- ABLOY BEAT padlocks are operated with users' mobile phones.
- Users are invited into CIPE Manager and BEAT backend systems with their mobile phone numbers.
- Each mobile device will be registered with advanced credential technology.
- Similarly, each BEAT lock will also have a unique ID so that all access tokens are granted for specified locks and users for a certain time frame.
- BEAT locks can be operated without cellular connection when access rights are updated on the mobile devices before entering the offline area.
- CIPE Manager provides full control to track, audit and administer all access rights remotely, from wherever you are.
- Users enjoy the benefits of secure and convenient mobile connectivity and access, on the go.



ABLOY BEAT adds operational excellence to critical infrastructure, business and industry

Always in sync with your security situation, keeping a smooth flow of all your contractors and employees, while tracking every movement. For high-end security and comprehensive critical infrastructure, business and industry protection including:



Water



Energy



Telecom



Transportation and Logistics

Specifications



Body

- Material: Case-hardened steel
- Finish: Chrome
- Non-metallic part: Grivory



Battery lifetime

- 5 years or 5000 access cycles
- Battery types: Panasonic CR2 and Saft LS14250
- Back up power through USB cable



Security grade

- EN16864 grade 4



Shackle

- Material: Case-hardened steel
- Finish: Chrome
- Thickness: 10mm



Connectivity

- Bluetooth BLE 4.2
- Range up to 50m



Shackle monitoring

- LED indications for lock status
- Audit logs



Operating temperature

- -25°C to 60°C



IP class grading

- IP68

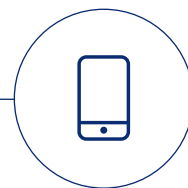
Digital Portfolio for Critical Infrastructure

Your bridge to the future

Digital Portfolio by ASSA ABLOY Global Solutions is a future-proof offering of high-level security and access control solutions for the most demanding requirements of critical infrastructure protection. Our portfolio includes keyless, electromechanical and mechanical options, across all businesses, industries and critical infrastructure sites. Users can enjoy complete situational awareness, provided by CIPE Manager, our user-friendly management system. Comprehensive support is provided by Abloy's worldwide distribution and service network, as well as regional competence centres.



Supported by global presence and services



THE BEAT APPLICATION

You can download the BEAT mobile application from the Google Play or the Apple App store.

MINIMUM OS REQUIREMENTS

iOS 11.0 or newer

iOS is available in the Apple App Store. Compatible with iPhone, iPad, and iPod touch.





8802090 | 4/2021

ABLOY offers security and locking innovations dedicated to creating more trust in the world. Combining digital and mechanical expertise, Abloy Oy develops industry-leading security solutions that protect people, property and business. Abloy is part of the ASSA ABLOY Group, the global leader in access solutions. Every day, we help billions of people experience a more open world.

Part of ASSA ABLOY

Abloy Oy
 Wahlforsinkatu 20
 P.O.Box 108
 FI-80101 Joensuu | Finland
 Tel. + 358 20 599 2501
 Abloy.com

This content is protected by Intellectual Property Rights Laws. The title to the content shall not pass to you, and instead shall remain with Abloy Oy or a third party holding the title. Abloy develops continuously the products and solutions offered. Therefore, the information contained in the document is subject to change without notice. ABLOY PROVIDES THIS CONTENT ON AN "AS IS" BASIS WITHOUT ANY WARRANTIES OF ANY KIND EXPRESS, IMPLIED, OR STATUTORY."



ABLOY



Keyless

GLOBAL

KEYLESS GLOBAL

P.O. Box: 108872
 Musaffah | M 16
 Abu Dhabi | UAE

P.O. Box: 54582
 Mezan Tower | Office 209
 Muhaisnah 4 | Dubai | UAE

Tel 1: +971 (4) 263 1314
 Tel 2: +971 (2) 622 2790
 Fax : +971 (2) 622 2791
 Email: info@keylessglobal.com
 Web: www.keylessglobal.com